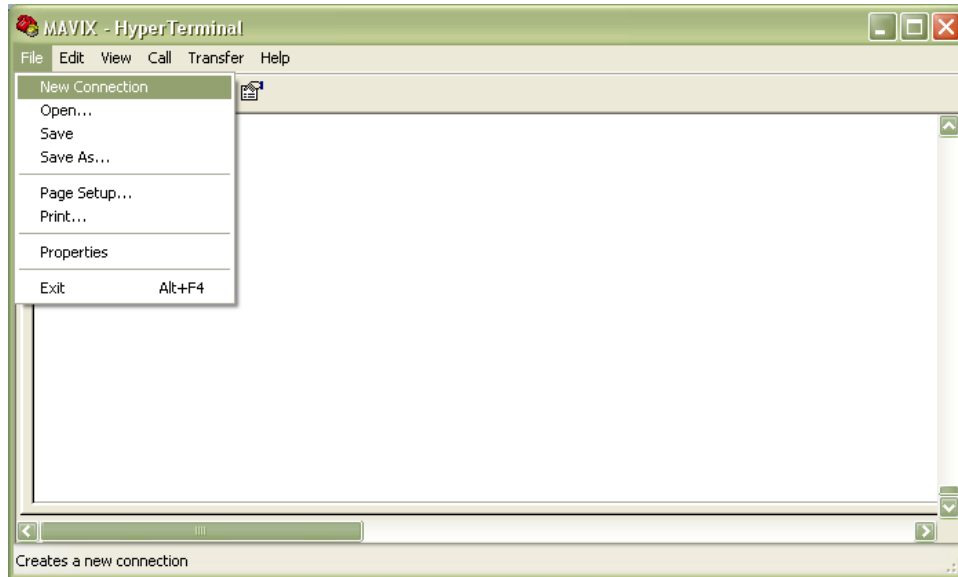


HOW TO CONNECT TO MEDIARACER USING CONSOLE CABLE

Connect the serial end of the cable to the serial port of your PC. Usually its COM1 by default.
Connect the other end RJ-45 cobbector to COM3 of the Mediaracer (first from the left RS-232).
Open the hyperterminal program



Name it



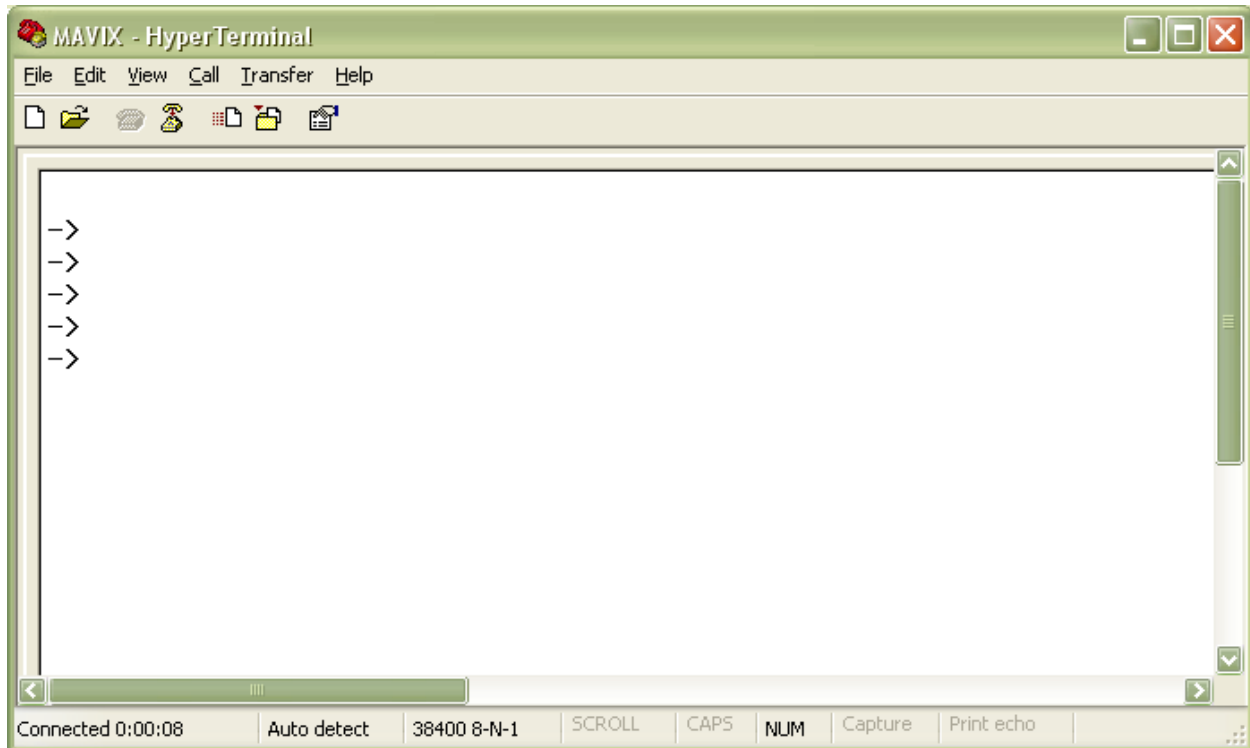
Select a comport on the PC (the right one should be picked automatically)



Set the parameters as shown below



Click the Enter key couple of time to see if the arrows are seen like shown on the bottom. If the arrows are seen, that means that the Mediaracer is connected properly.



To set the unit to factory settings, Press CTRL-X and then spacebar when prompted. Type in F and ENTER. Press CTRL-X again and let the unit reboot all the way without pressing spacebar this time. The unit now is set to factory settings with a new IP of 192.200.10.20.